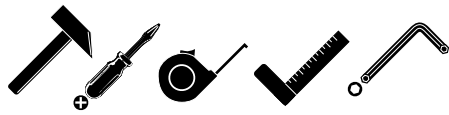
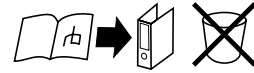


MONTAGE HANDLEIDING

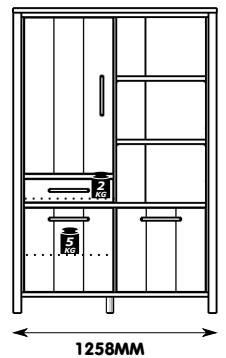
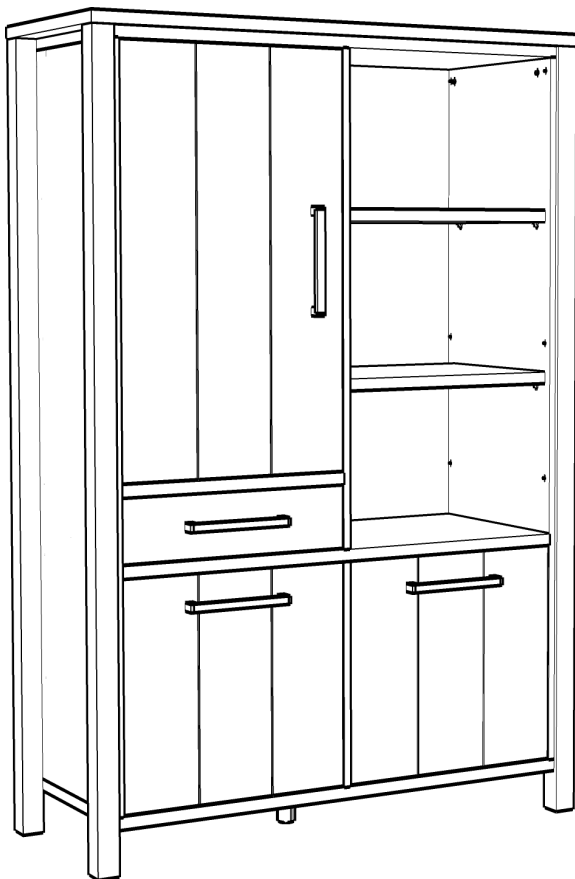
INSTRUCTIONS DE MONTAGE - ASSEMBLY INSTRUCTION - MONTAGE ANLEITUNG - STRUZIONI DI MONTAGGIO
 INSTRUÇÕES DE MONTAGEM - INSTRUCCIONES DE MONTAJE - MONTAŽU UPUTE

LOVINA BAR6

meuble bar ferme - bar - bar cabinet



- | | | | |
|-------------------------------------|------------------------------------|-----------------------------------|--------------------------------------|
| A G460124 M4x23 8 | B G4201640 4 | C G4608891 6 | D G4608892 6 |
| E G4608994 M6x30 16 | F G4608717 20 | G G440102 6 | H G460255 12 |
| I G440107 6 | J G440119 3 | K G4650109 14 | L G460252 12 |
| M G460086 8x30 18 | N G470005 4,5x45 6 | O G460811 16 | P G470121 3,5x25 24 |
| Q G460210 5 | R G4401303 1 | S G4600781 7x50 1 | T G470077 6.3x10.5 4 |
| U G4608751 4 | V G4750052 4 | W G460858 1 | X G460859 1 |
| Y G4608991 2 | Z G4501361 1 | | |



NL**ONDERHOUDSTIPS**

Oppervlakte kunststofdecor houtstructuur. Onderhoud: met lichte vochtige doek reinigen en hierna direct droog wrijven. De meubels zijn niet voor vochtige ruimten (bad, keuken etc.) bestemd. Vocht op het bovenblad direct opnemen. Montagetekening opbergen.

Het meubel moet door een vakkundig persoon, zoals in de handleiding staat beschreven worden gemonteerd. Door verkeerde montage kunnen gevaren ontstaan.

D**HINWEISE FÜR DIE PFLEGE**

Oberflächen Kunststoff-Dekor Holznachbildung. Pflegehinweis: Mit leicht feuchtem Tuch reinigen, sofort trocken nachwischen. Möbel nicht für Feuchträume geeignet (Bad, Küche etc.). Nässe auf Oberfläche unverzüglich wegwischen. Aufbauanleitung aufbewahren.

Das Möbel muss durch eine fachkundige Person entsprechend der Aufbauanleitung montiert werden. Bei fehlerhafter Montage kann es zu Gefahren kommen.

EN**ADVISE ON MAINTENANCE**

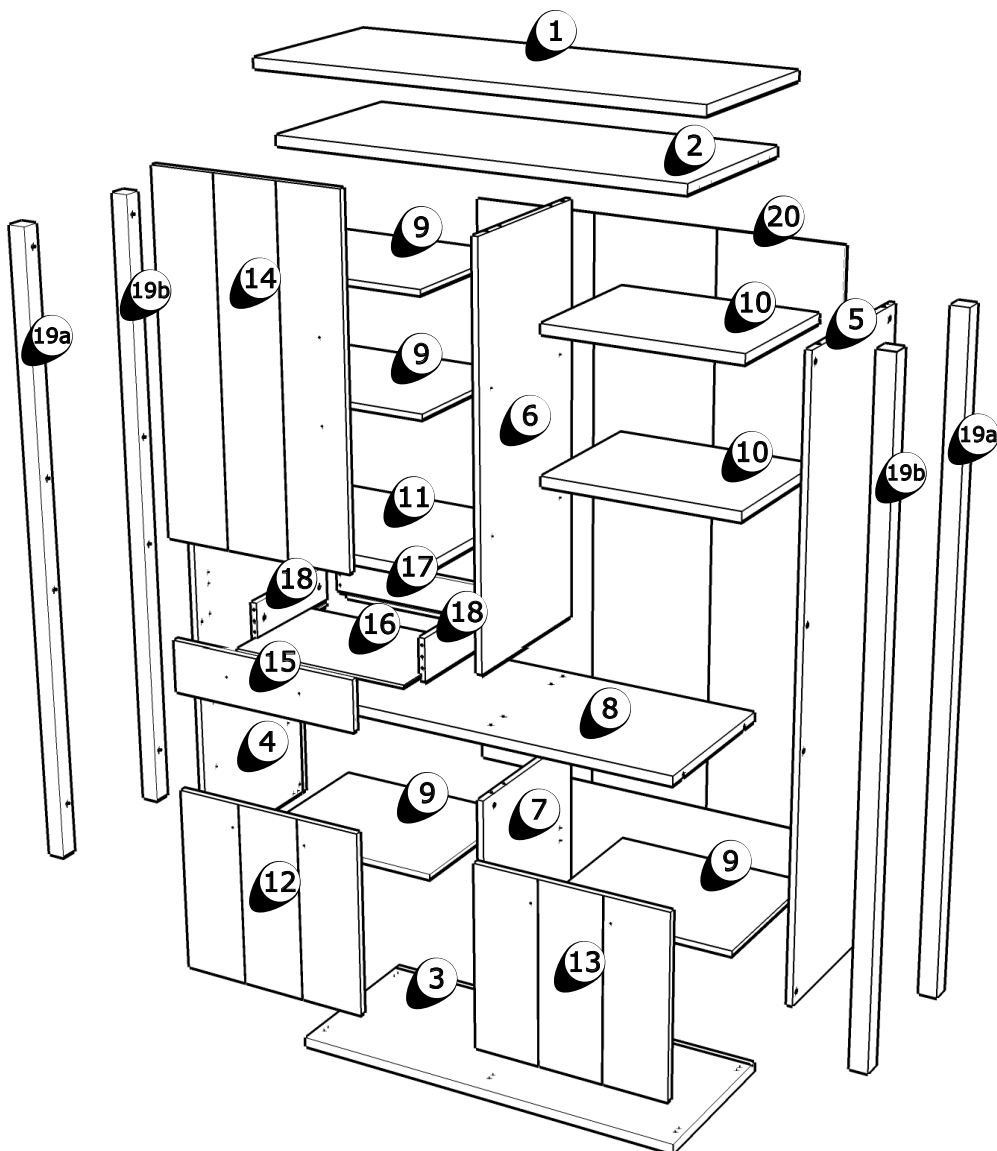
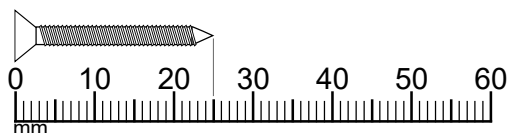
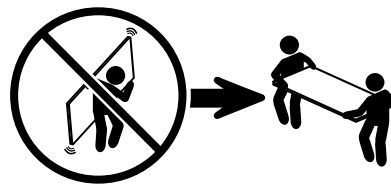
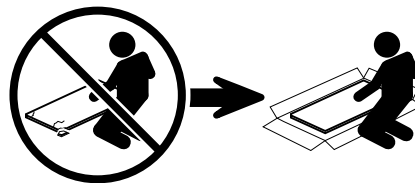
All surfaces in laminated wood colour finishes. Maintenance: clean with slightly moistened cloth, wipe dry immediately. Not suited for damp locations (kitchen, bathroom etc.). Wipe off wetness at once. Retain manual instruction.

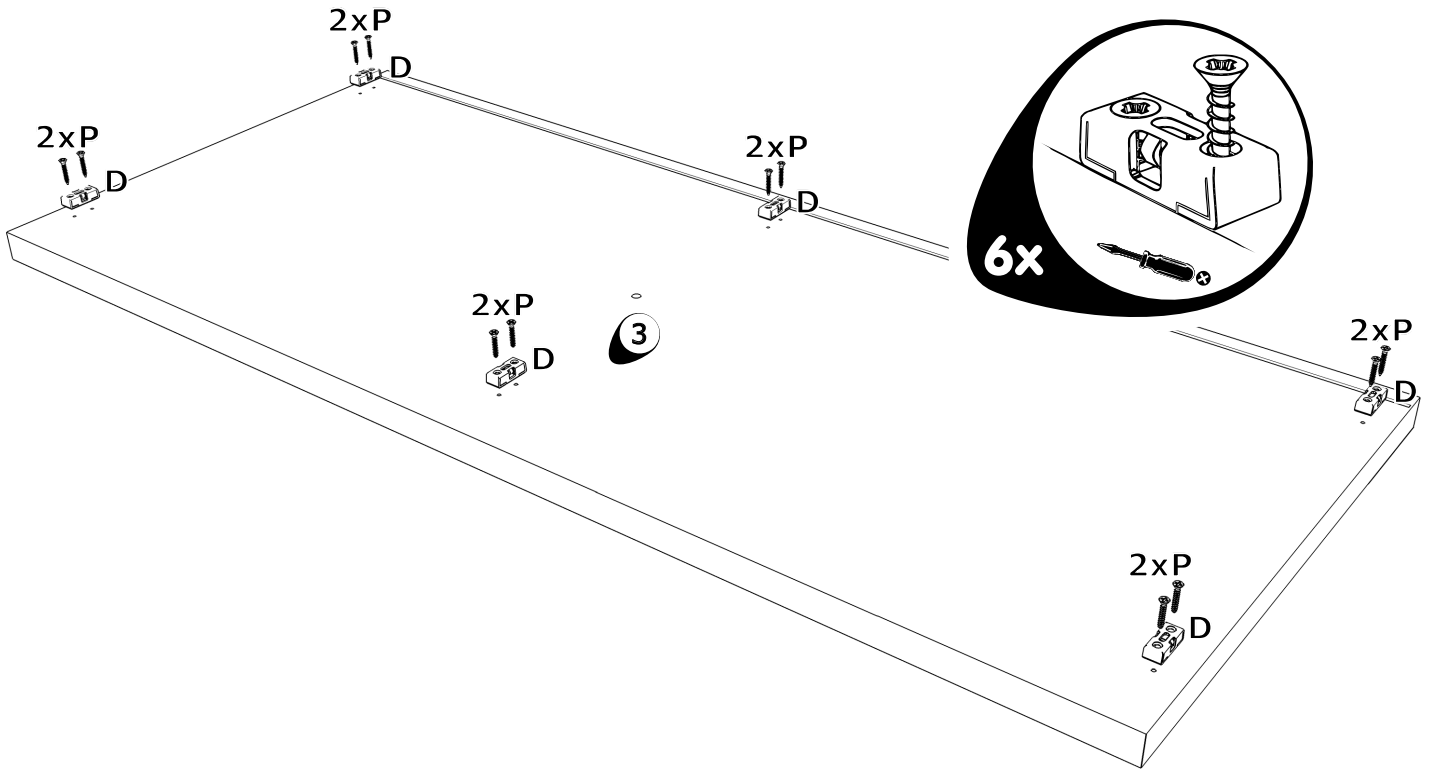
The unit must be put together by a specialist according to the assembly instructions. Hazards may arise in case of incorrect assembly.

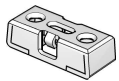
F**CONSEILS D' ENTRETIEN**

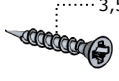
Panneaux de particules revêtus d'un film polymère. Entretien: utiliser un chiffon légèrement humide et repasser de suite avec un autre sec. Meuble inadapté aux pièces humides (bain, cuisine etc.). Toute trace de liquide est à essuyer immédiatement. Notice de montage à conserver.

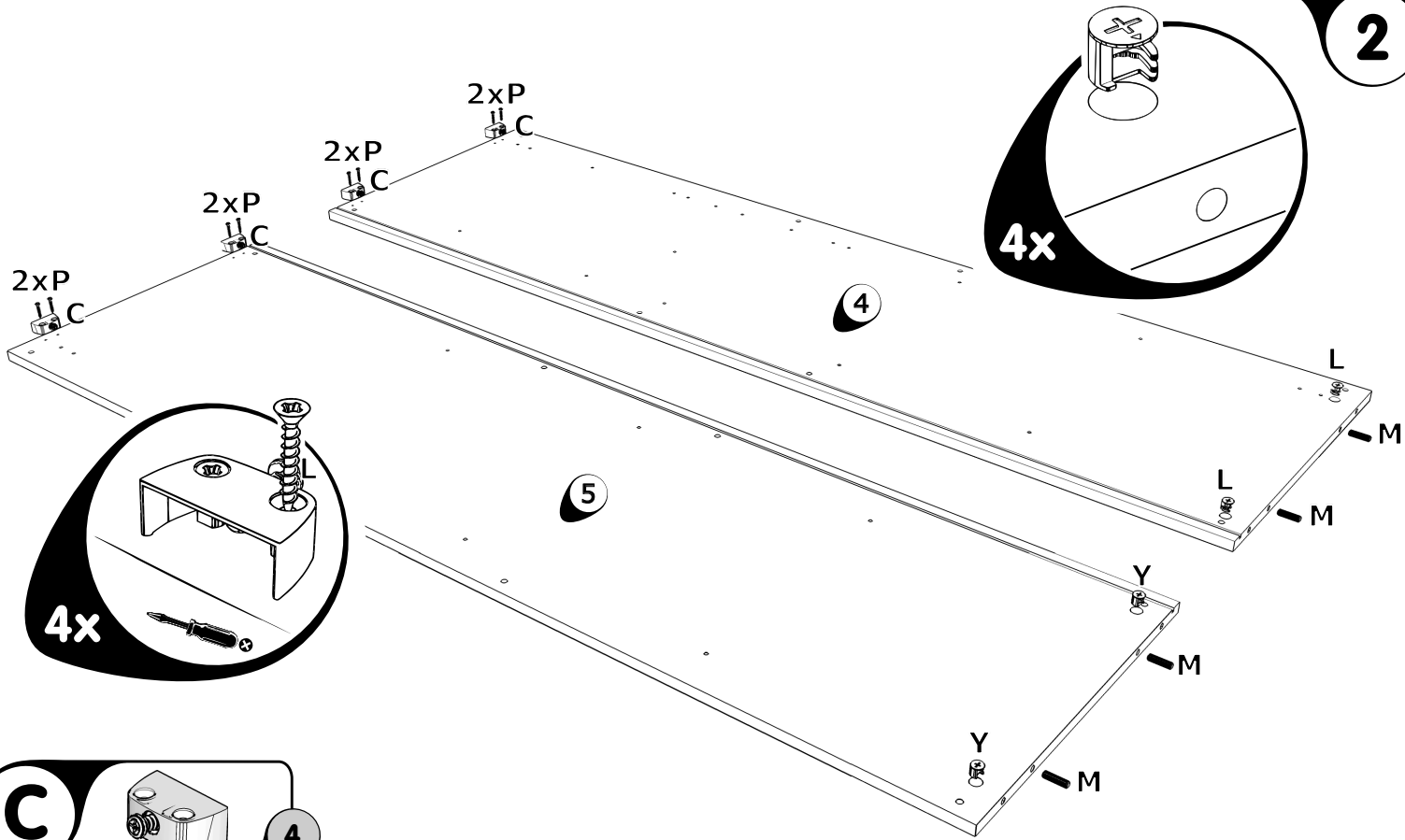
Le meuble doit être monté par une personne spécialisée en la matière, conformément à l'instruction de montage. En cas d'erreur de montage, des dangers peuvent se manifester.

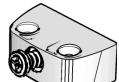





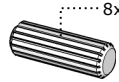
D  **6**
G4608892

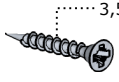
P  **12**
3,5x25
G470121




C  **4**
G4608891

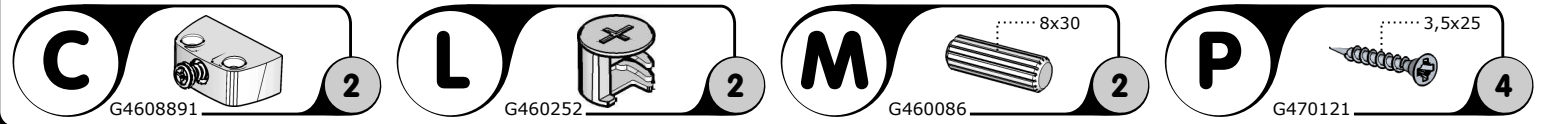
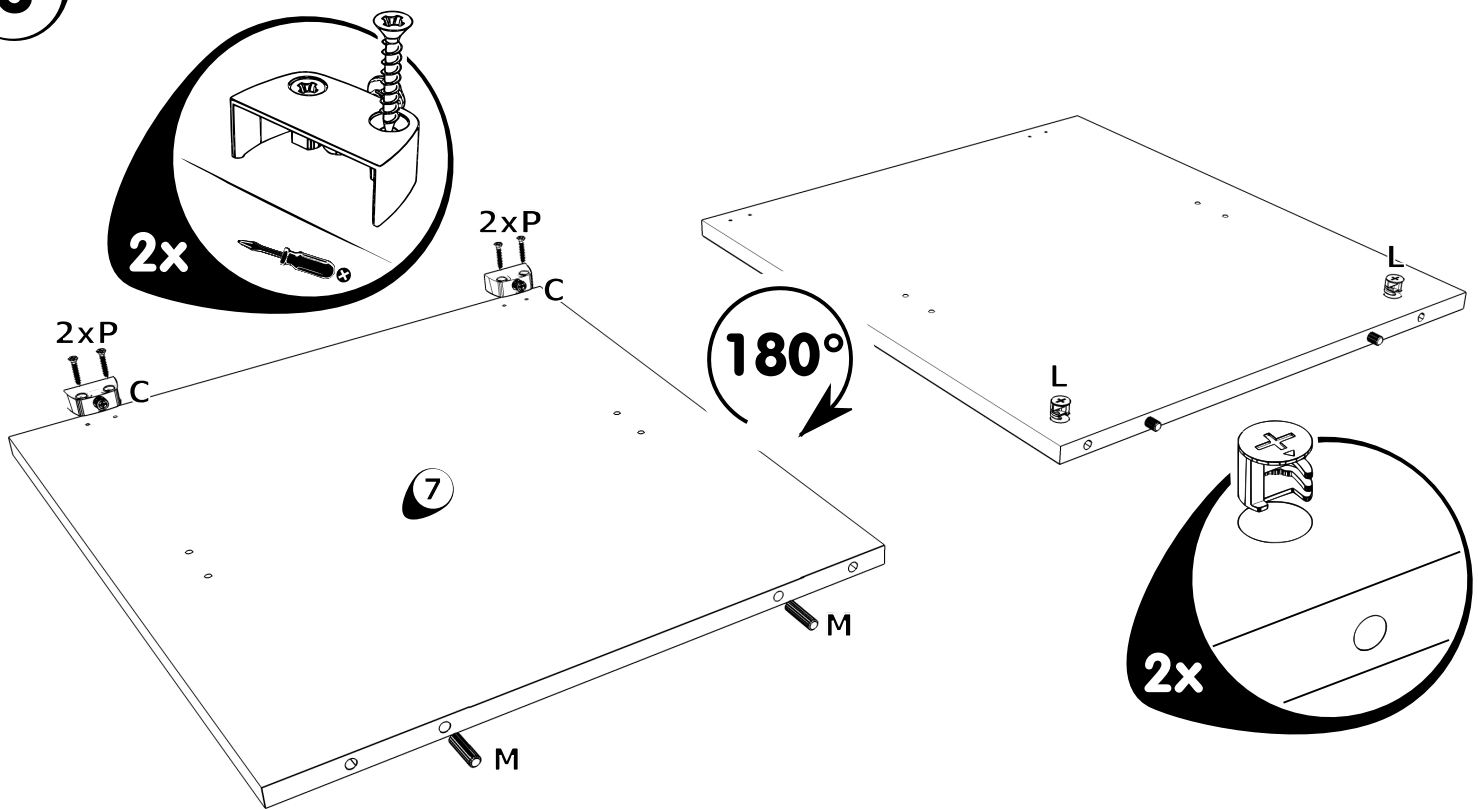
L  **2**
G460252

M  **4**
8x30
G460086

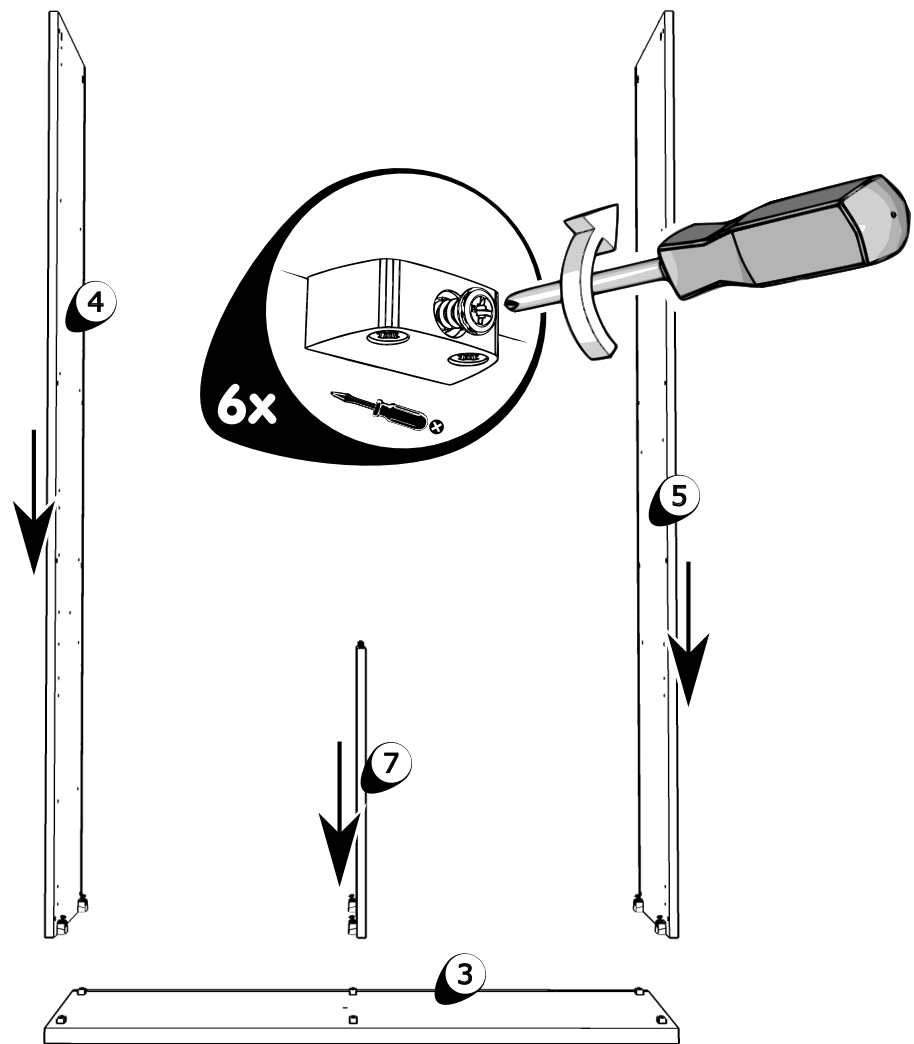
P  **8**
3,5x25
G470121

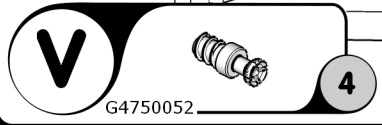
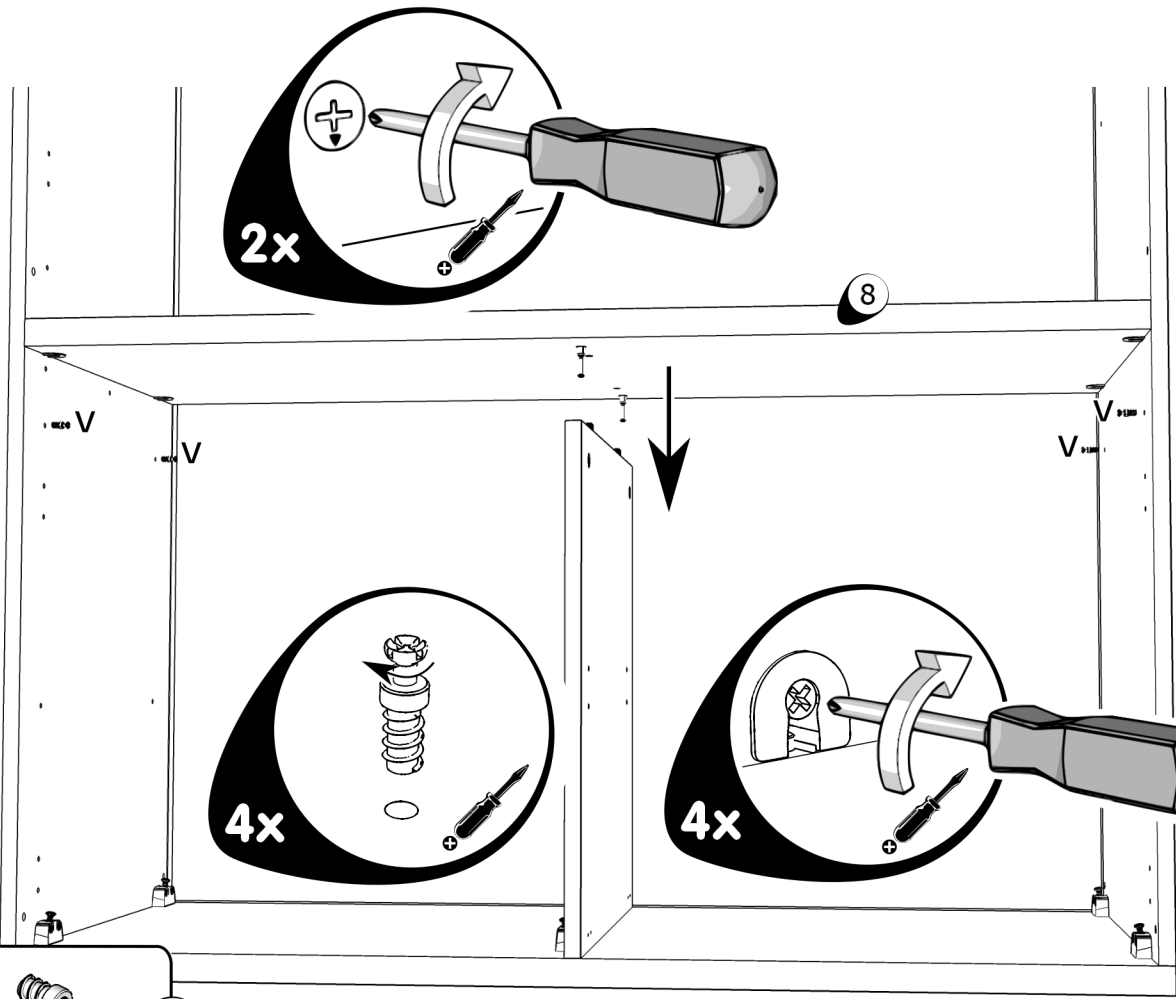
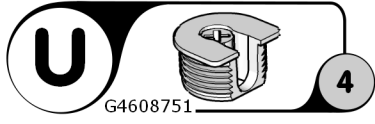
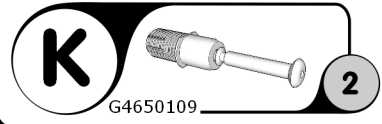
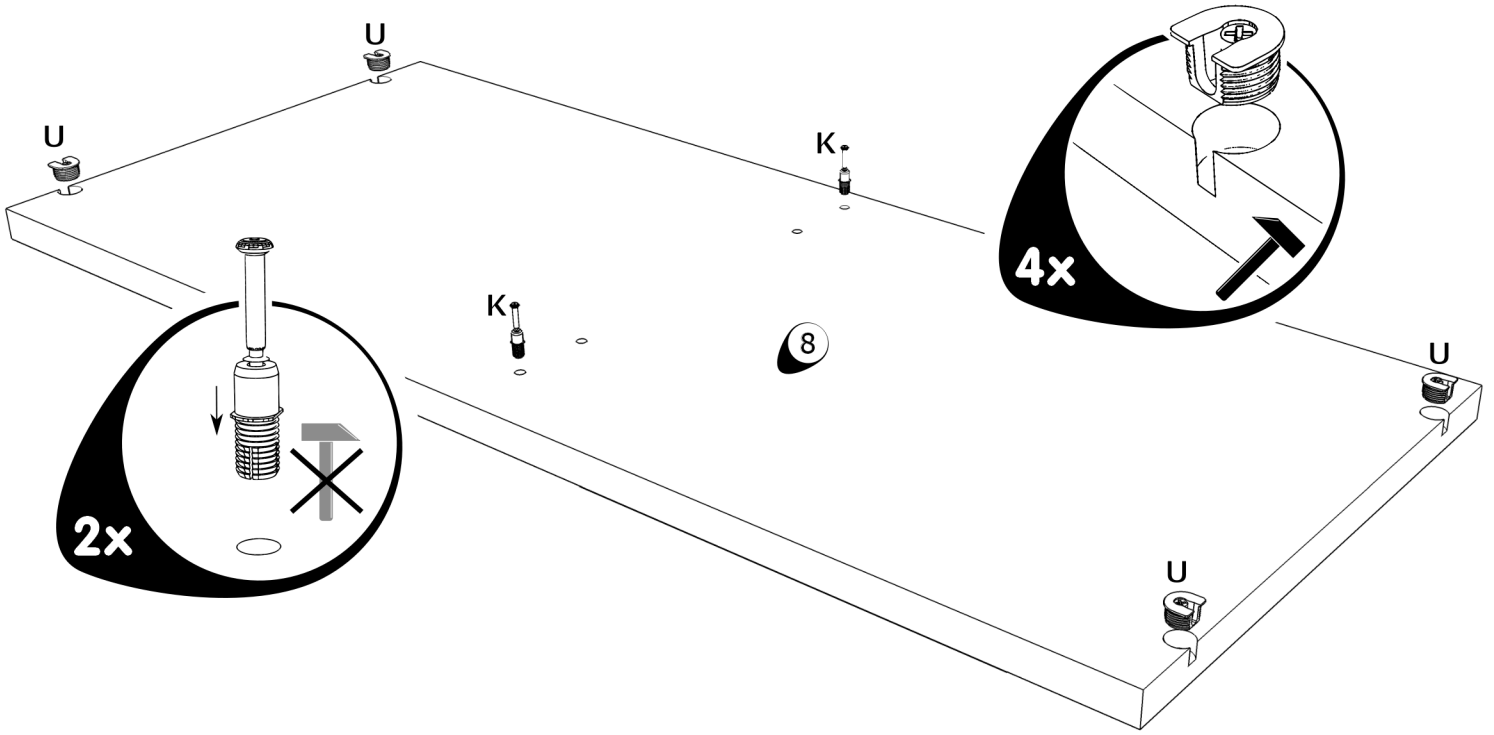
Y  **2**
G4608991

3

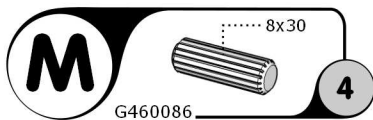
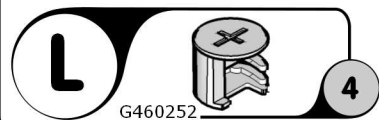
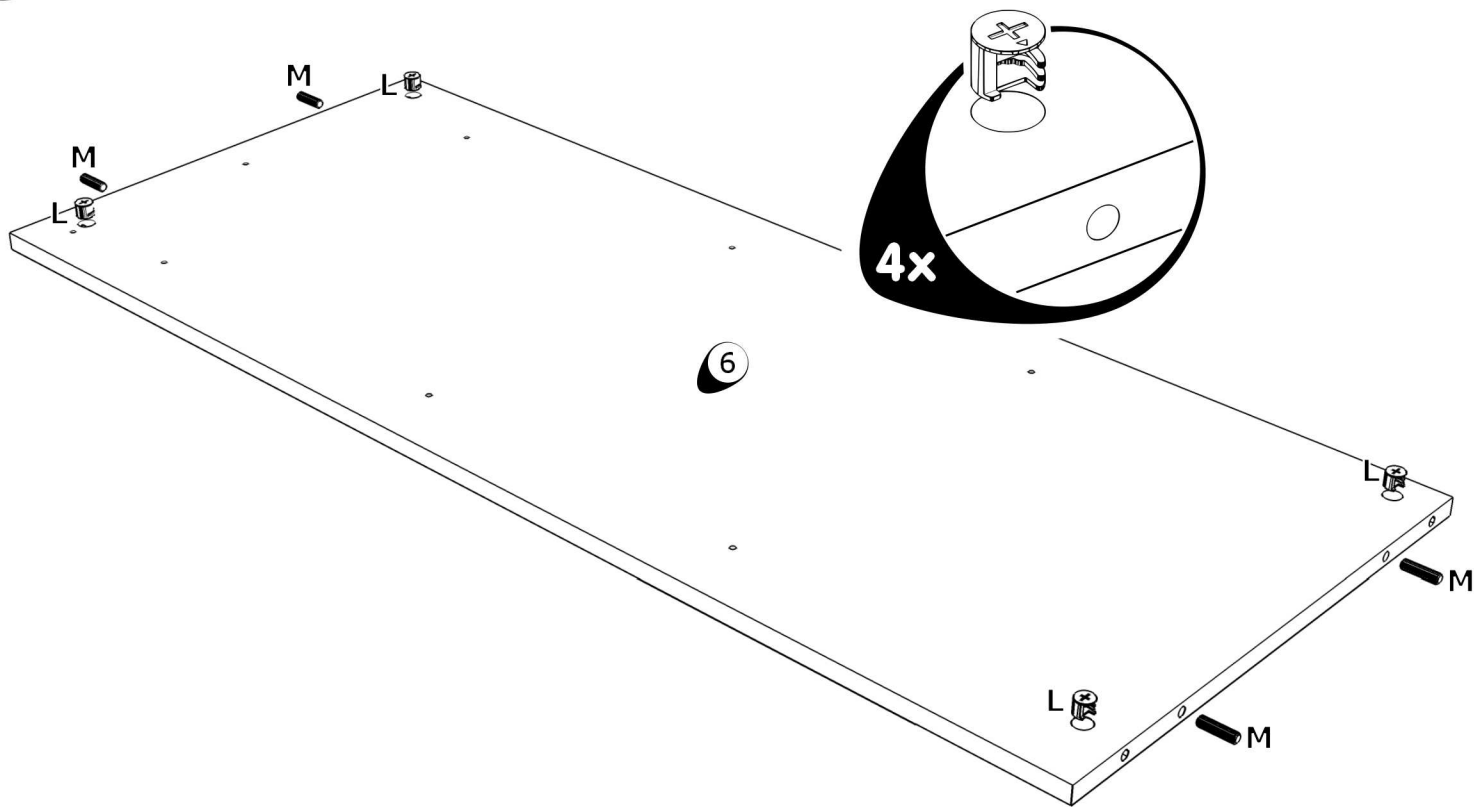


4

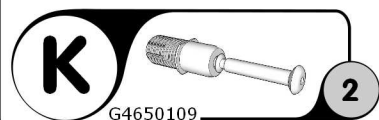
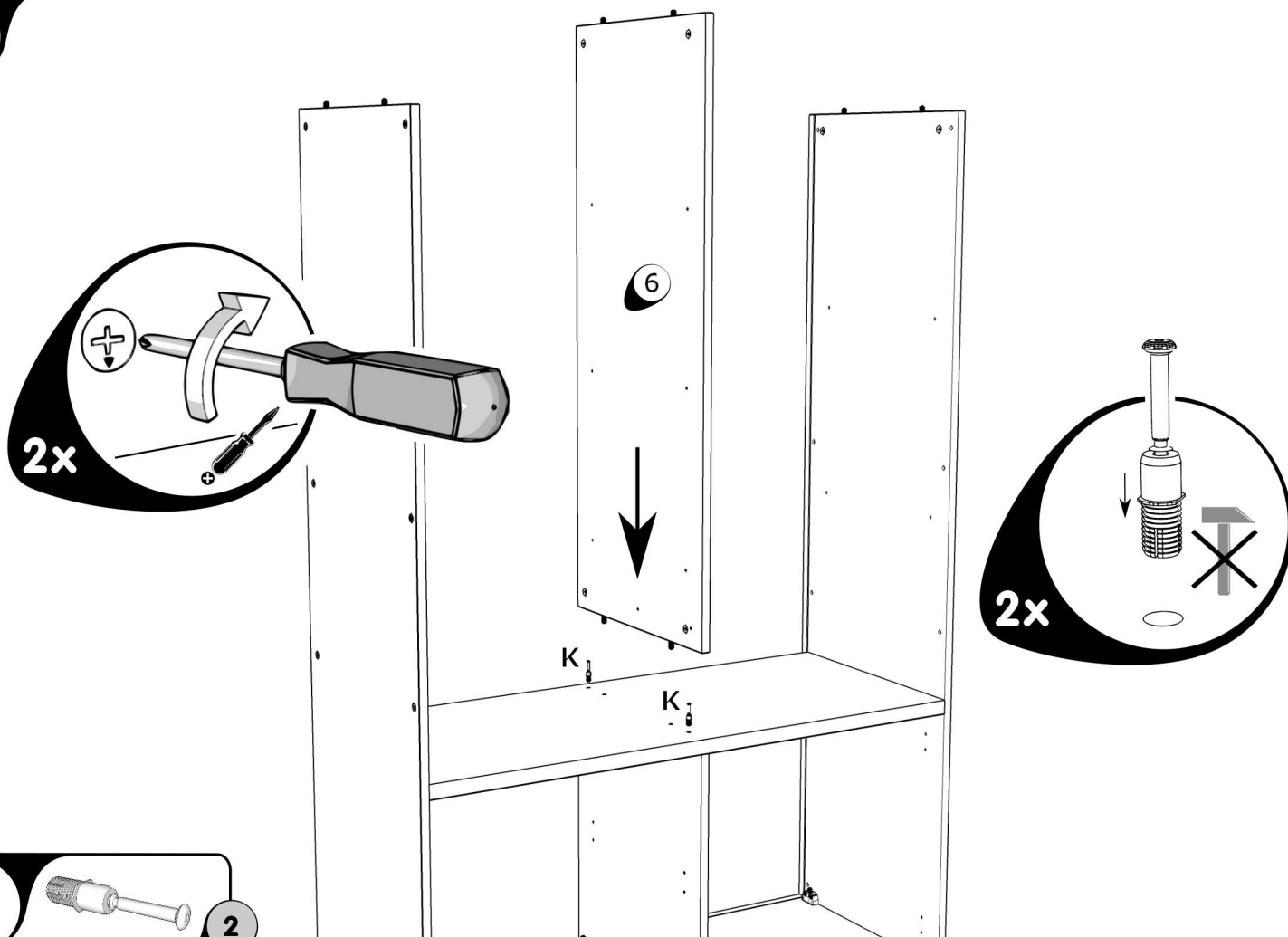


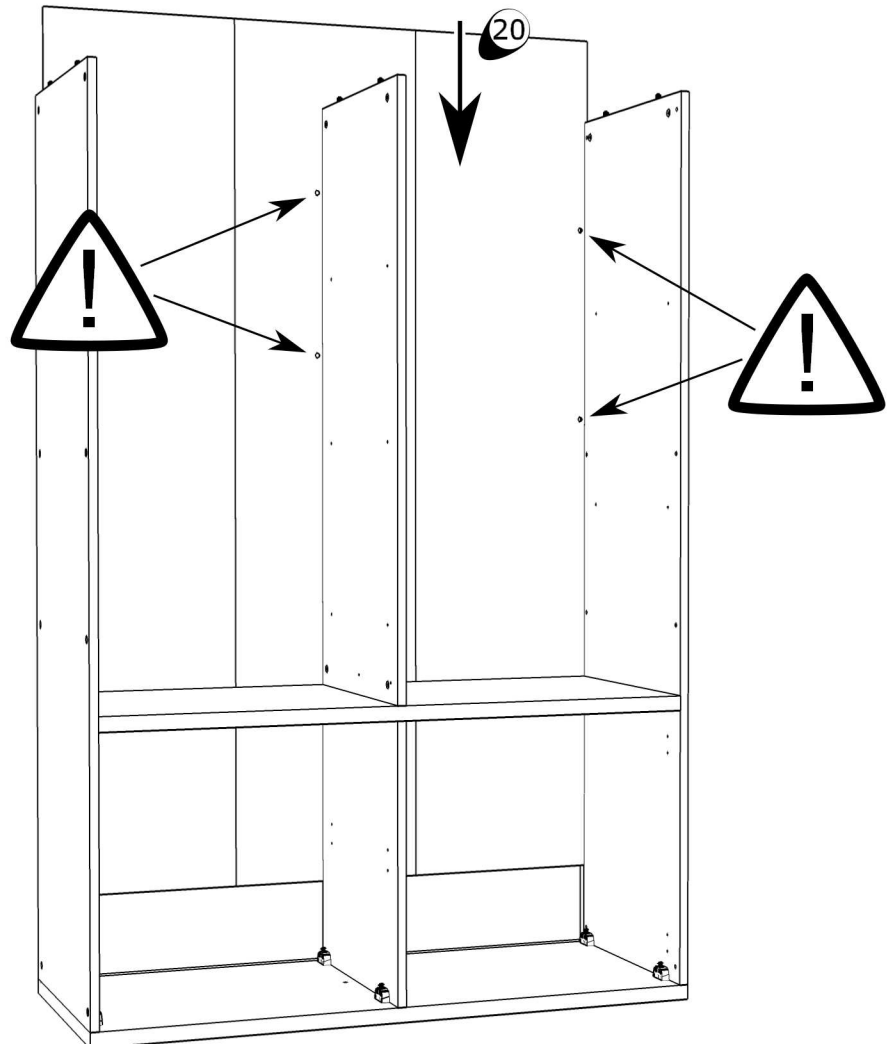
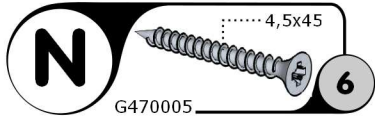
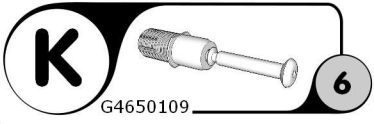
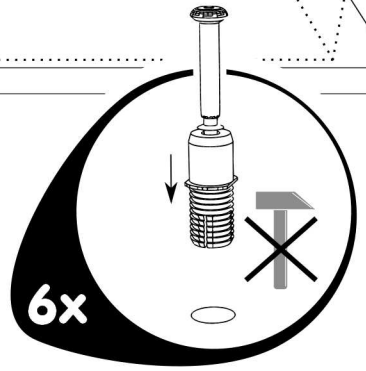
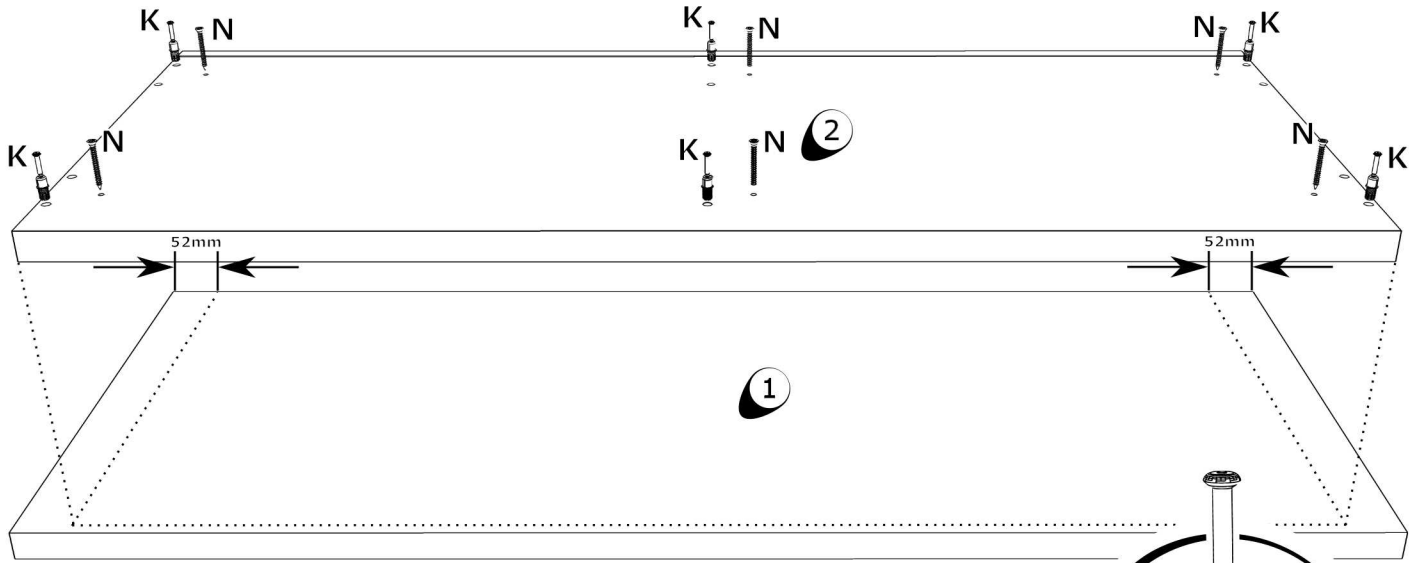


7

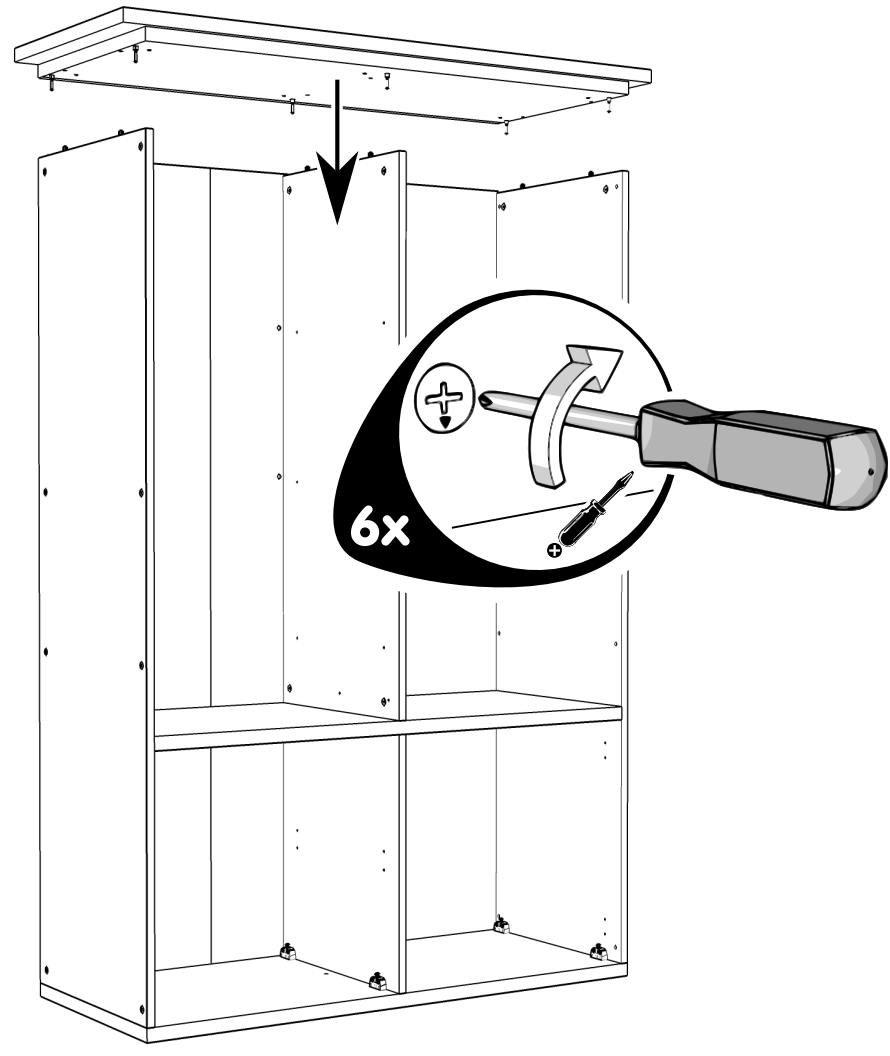


8

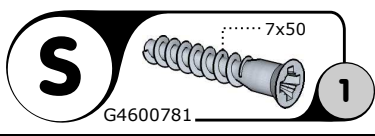
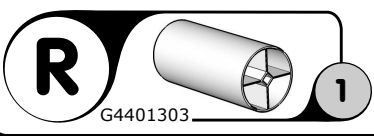
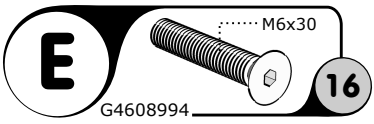
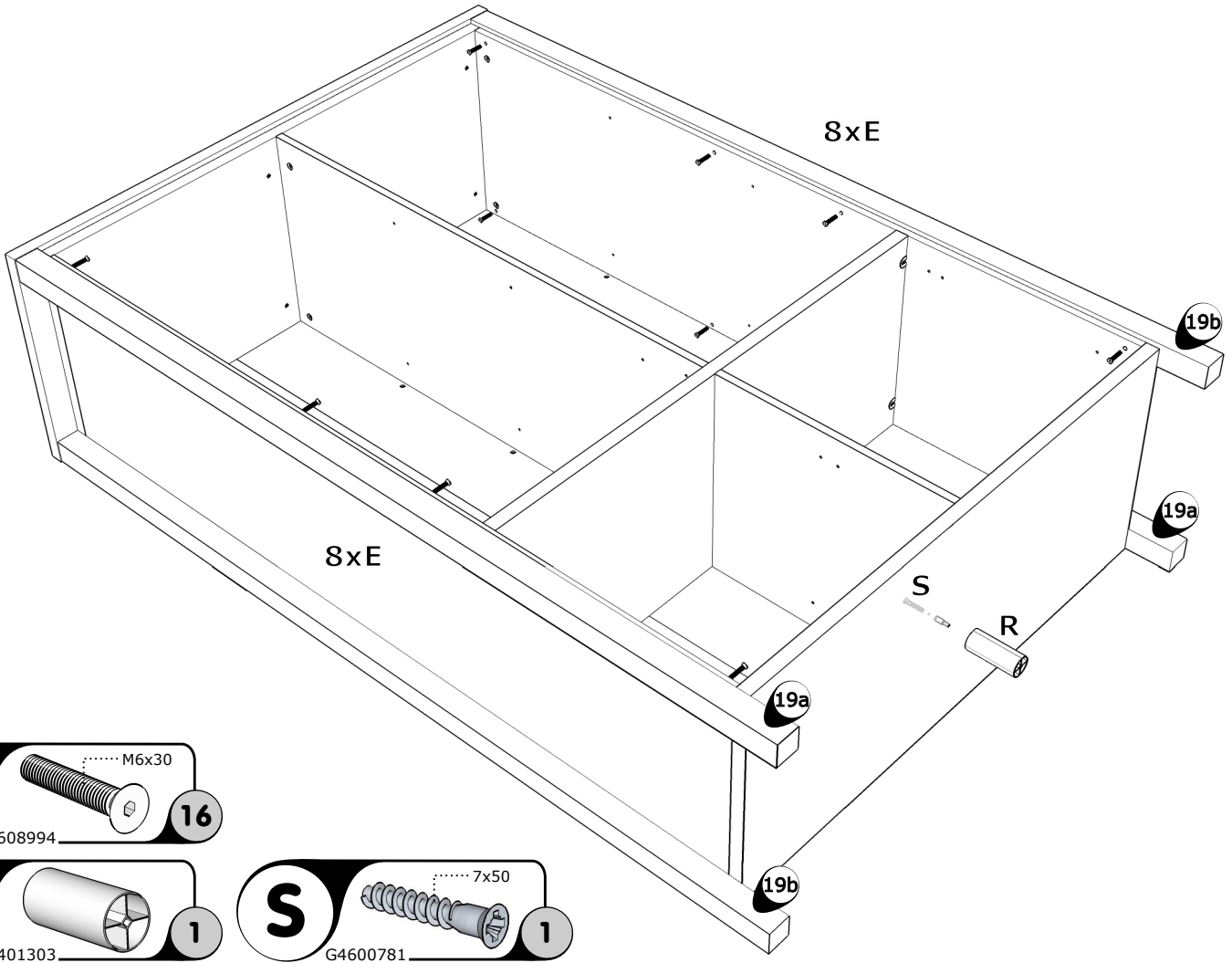


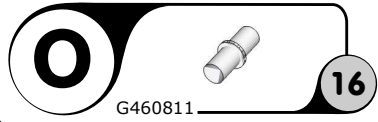
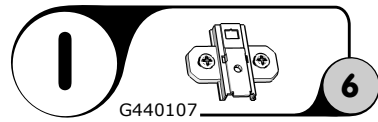
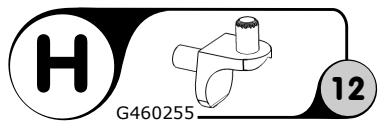
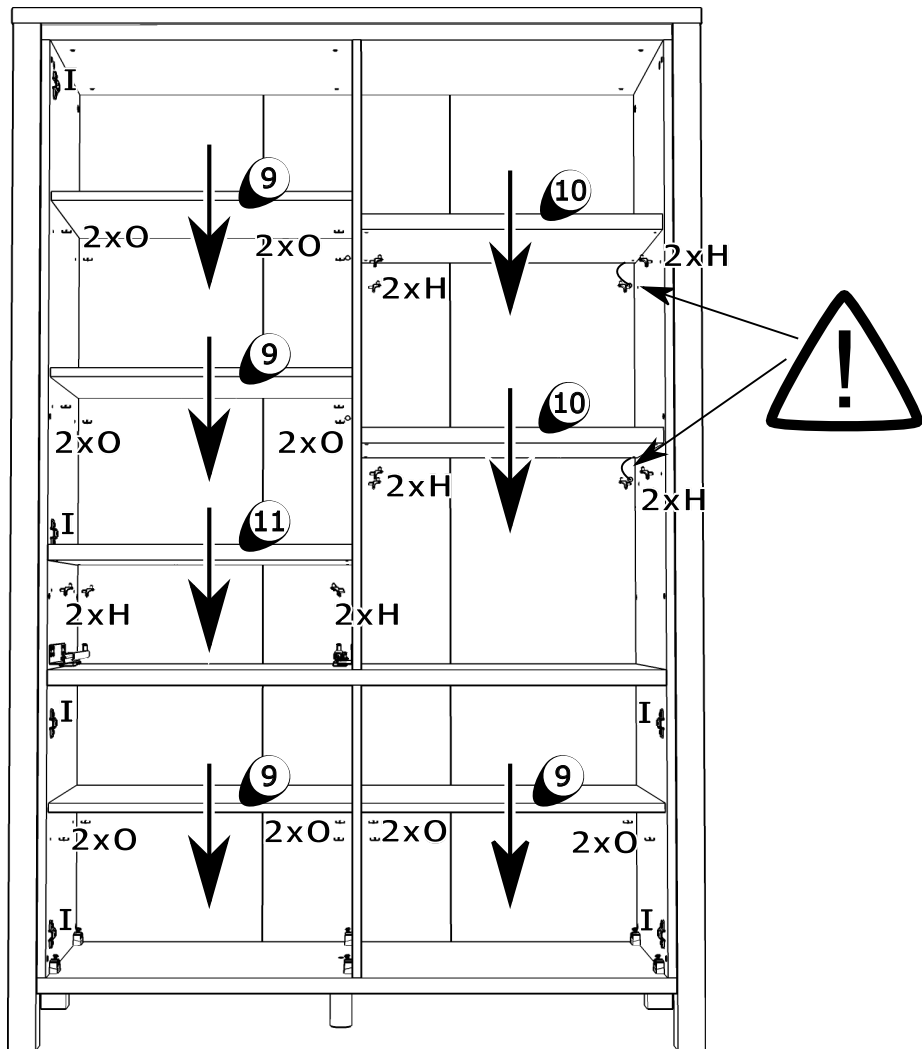
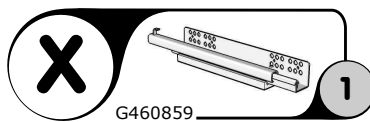
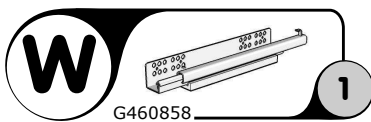
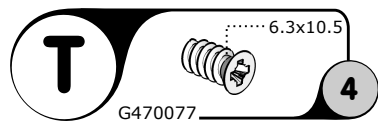
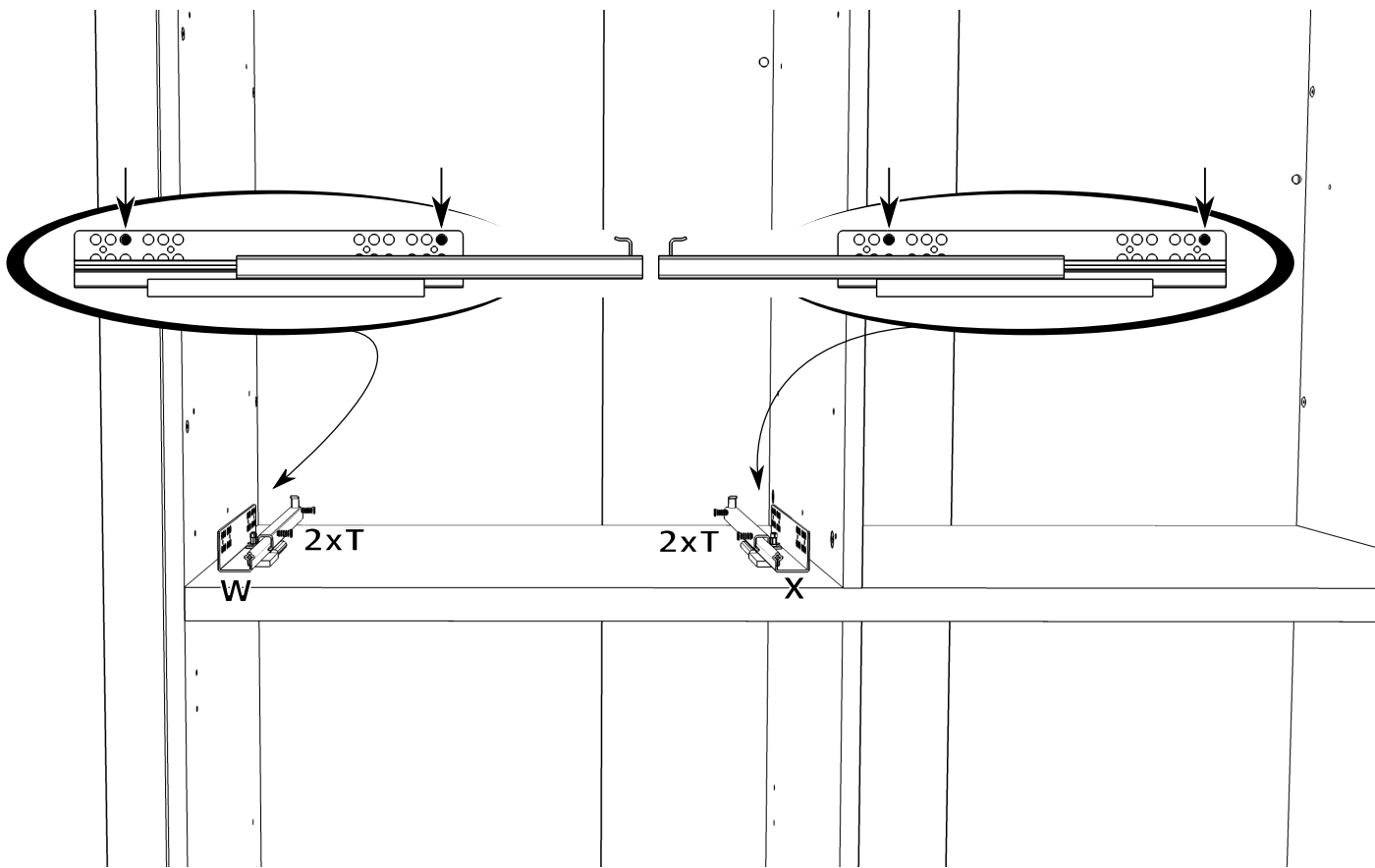


11

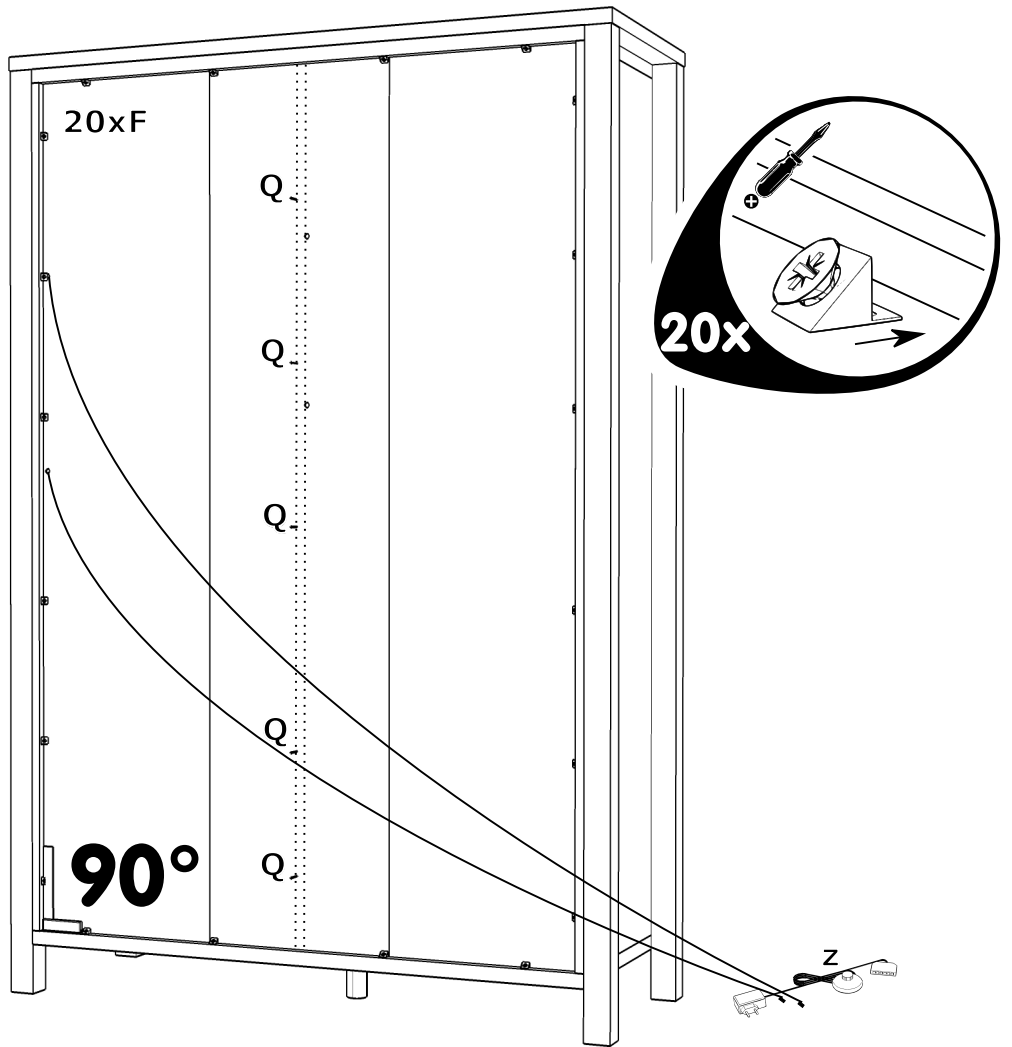



12







15

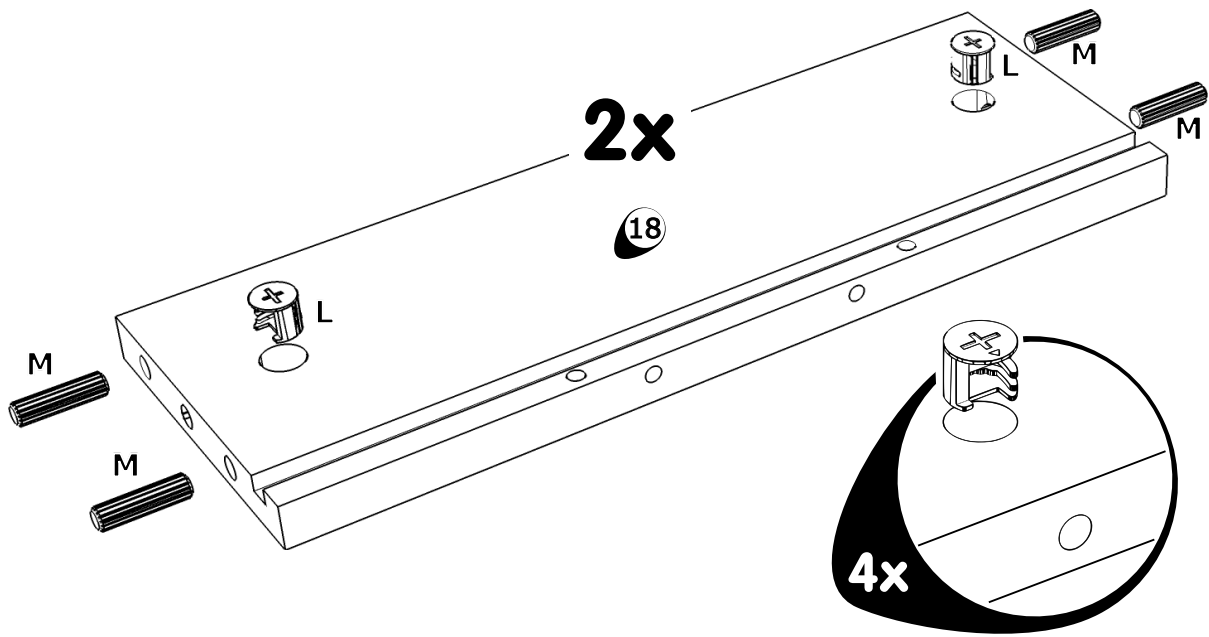



F  **20**
G4608717

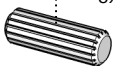
Q  **5**
G460210

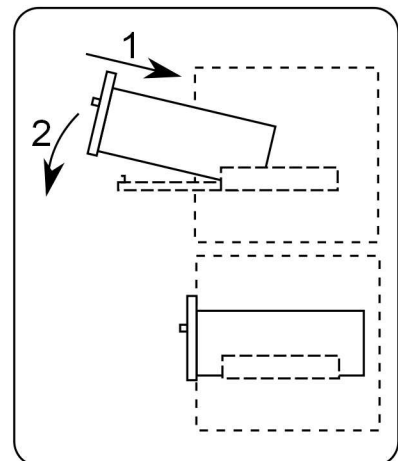
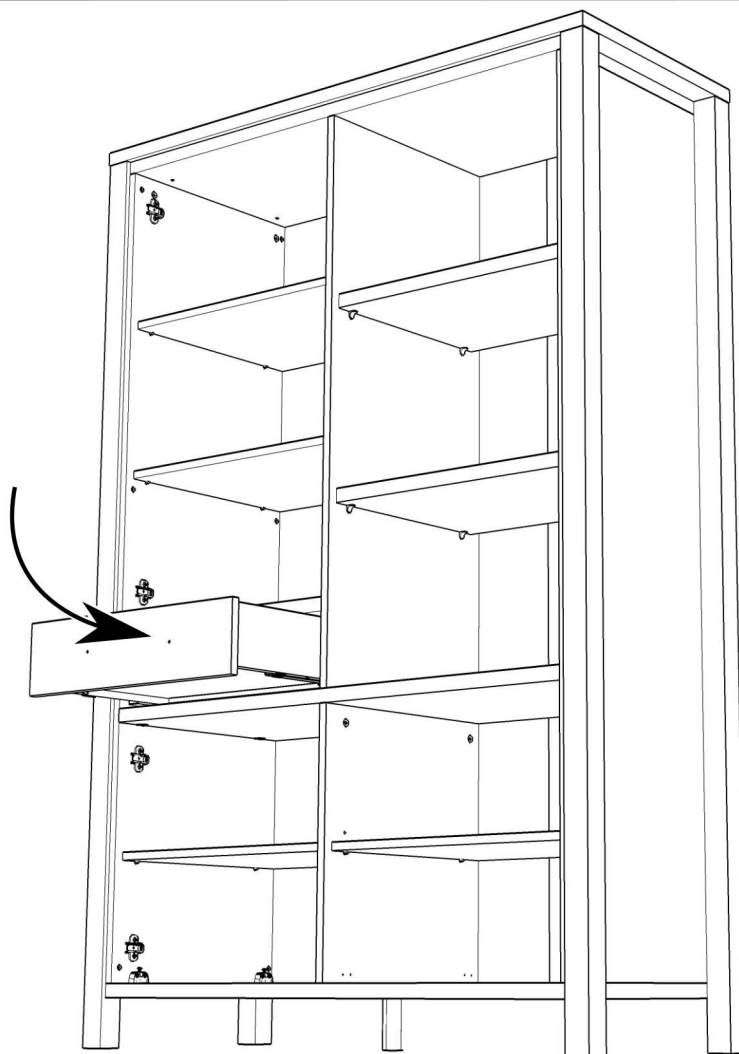
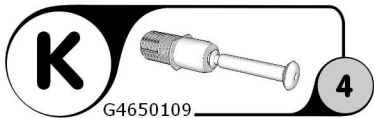
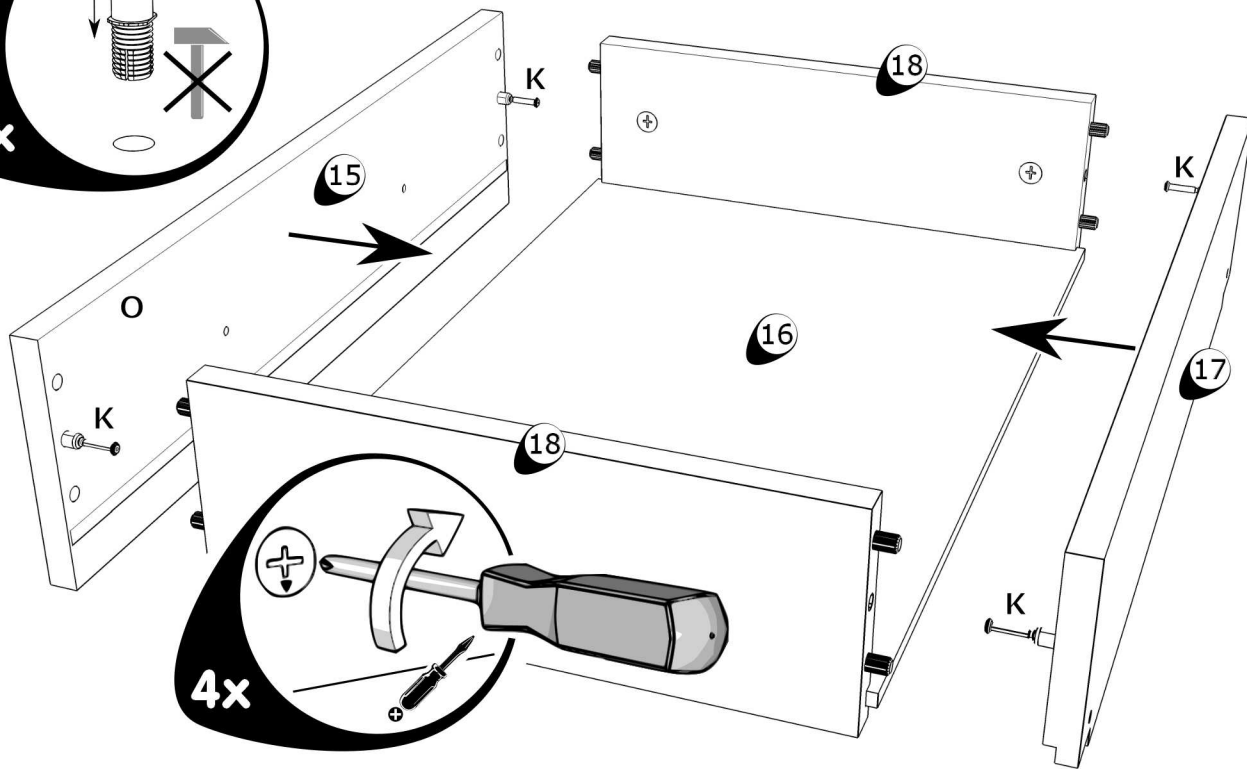
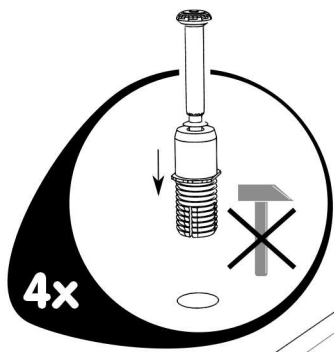
Z  **1**
G4501361

16

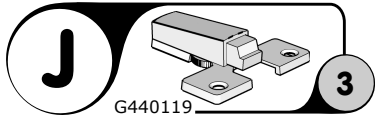
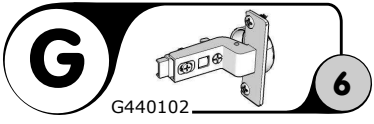
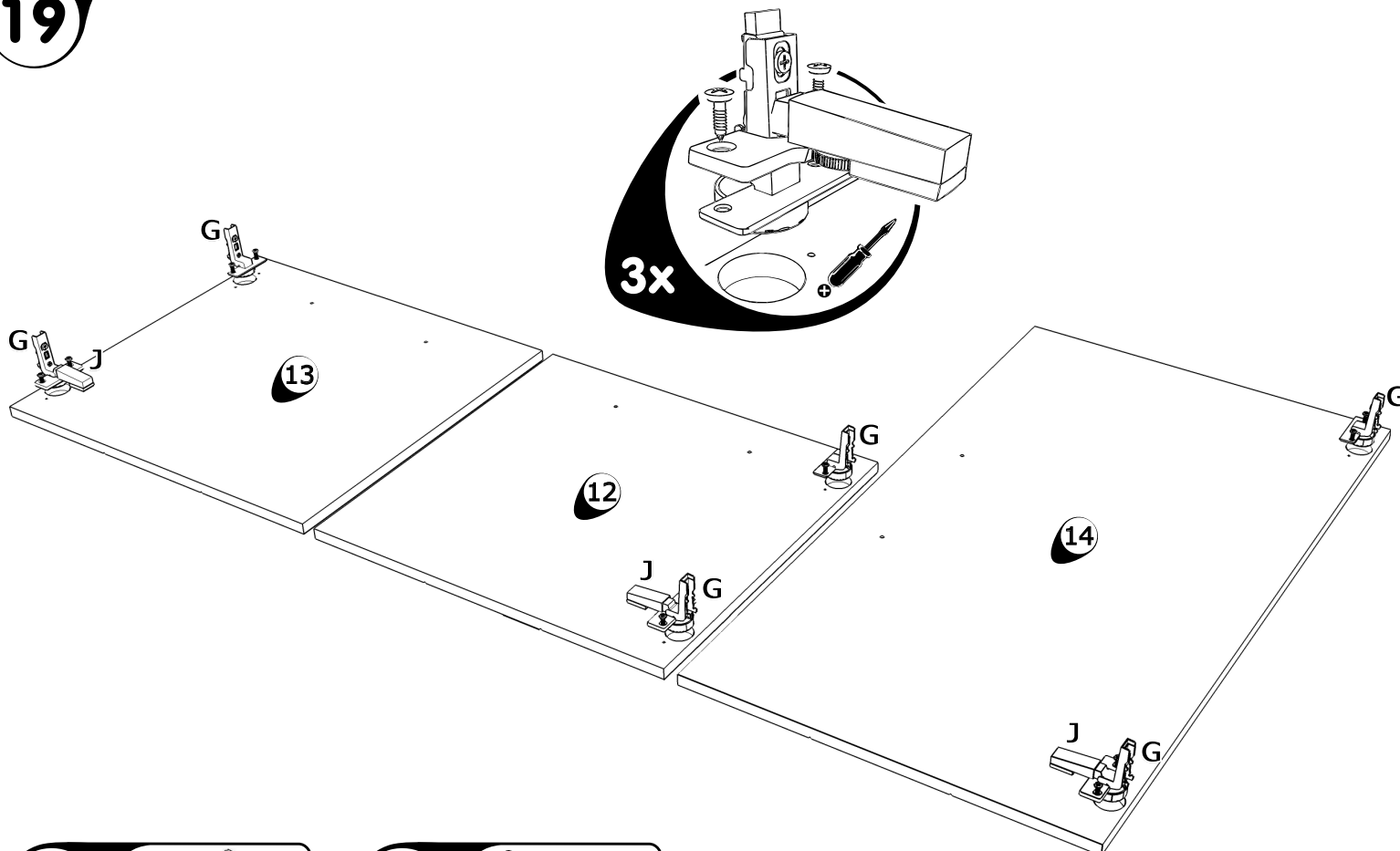


L  **4**
G460252

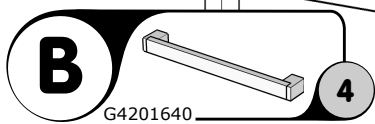
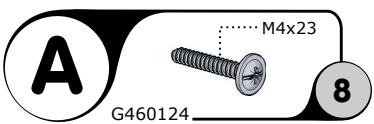
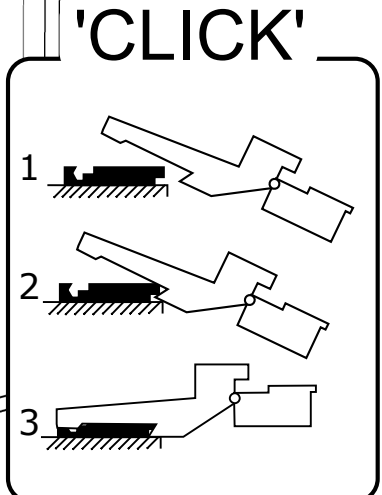
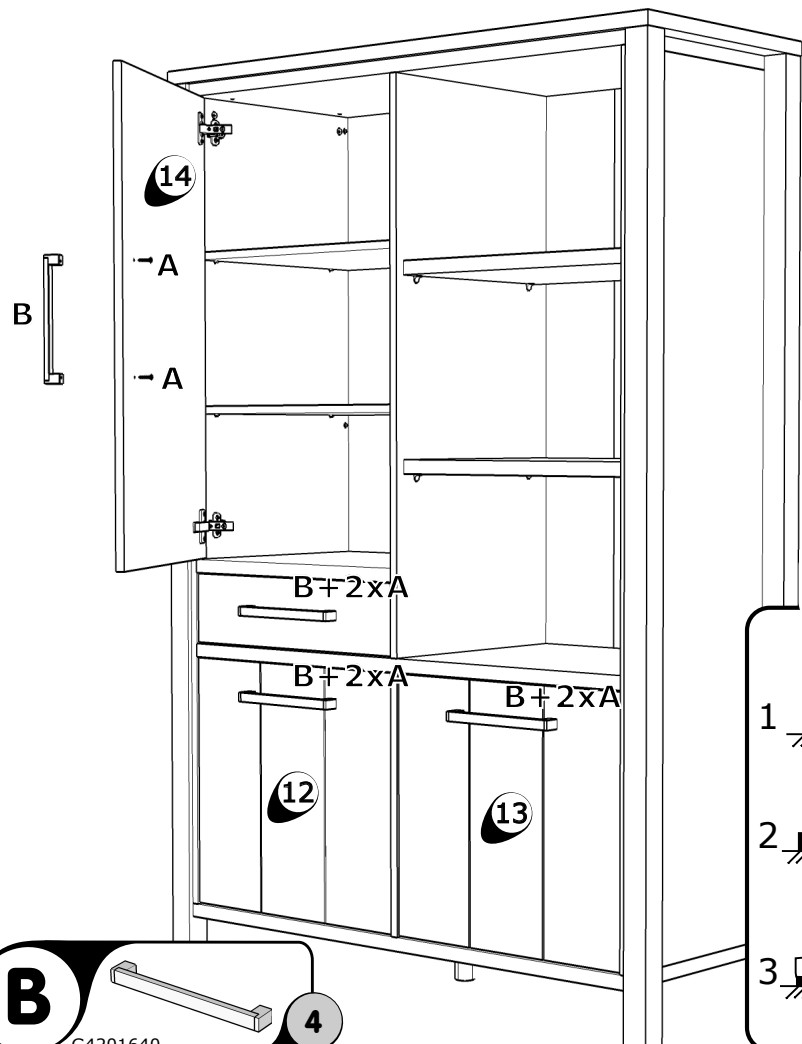
M  **8**
G460086 8x30



19



20



GEGEVENS AANKOPER

INFORMATIONS ACHETEUR - BUYER INFORMATION - KAUFER INFORMATIONEN

WINKEL

MAGASIN - SHOP - GESCHÄFT

PLAATS

LIEU - TOWN - ORT

AANKOOPDATUM

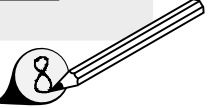
DATE DE L'ACHAT - DATE OF PURCHASE - KAUFDATUM

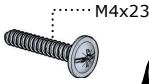
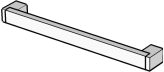
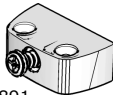
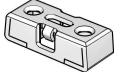
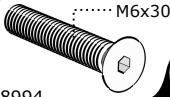

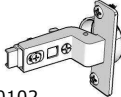
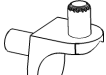

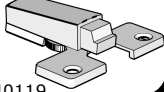
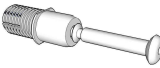

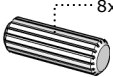
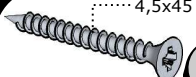

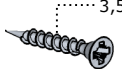

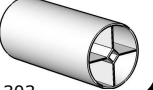
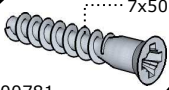
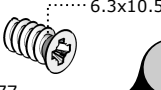
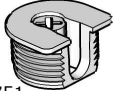

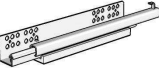
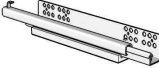


REFERENTIE

REFERENCE - REFERENCE - REFERENZ

KLEUR

COULEUR - COLOR - FARBE



| | | | |
|---|---|--|--|
| A G460124  | B G4201640  | C G4608891  | D G4608892  |
| E G4608994  | F G4608717  | G G440102  | H G460255  |
| I G440107  | J G440119  | K G4650109  | L G460252  |
| M G460086  | N G470005  | O G460811  | P G470121  |
| Q G460210  | R G4401303  | S G4600781  | T G470077  |
| U G4608751  | V G4750052  | W G460858  | X G460859  |
| Y G4608991  | Z G4501361  | | |

TOELICHTING EXPLICATIONS - EXPLANATION - ERKLÄRUNG

GEGEVENS AANKOPER

INFORMATIONS ACHETEUR - BUYER INFORMATION - KAUFER INFORMATIONEN

WINKEL

MAGASIN - SHOP - GESCHÄFT

PLAATS

LIEU - TOWN - ORT

AANKOOPDATUM

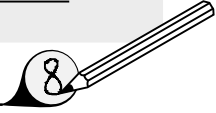
DATE DE L'ACHAT - DATE OF PURCHASE - KAUFDATUM















REFERENTIE

REFERENCE - REFERENCE - REFERENZ




KLEUR

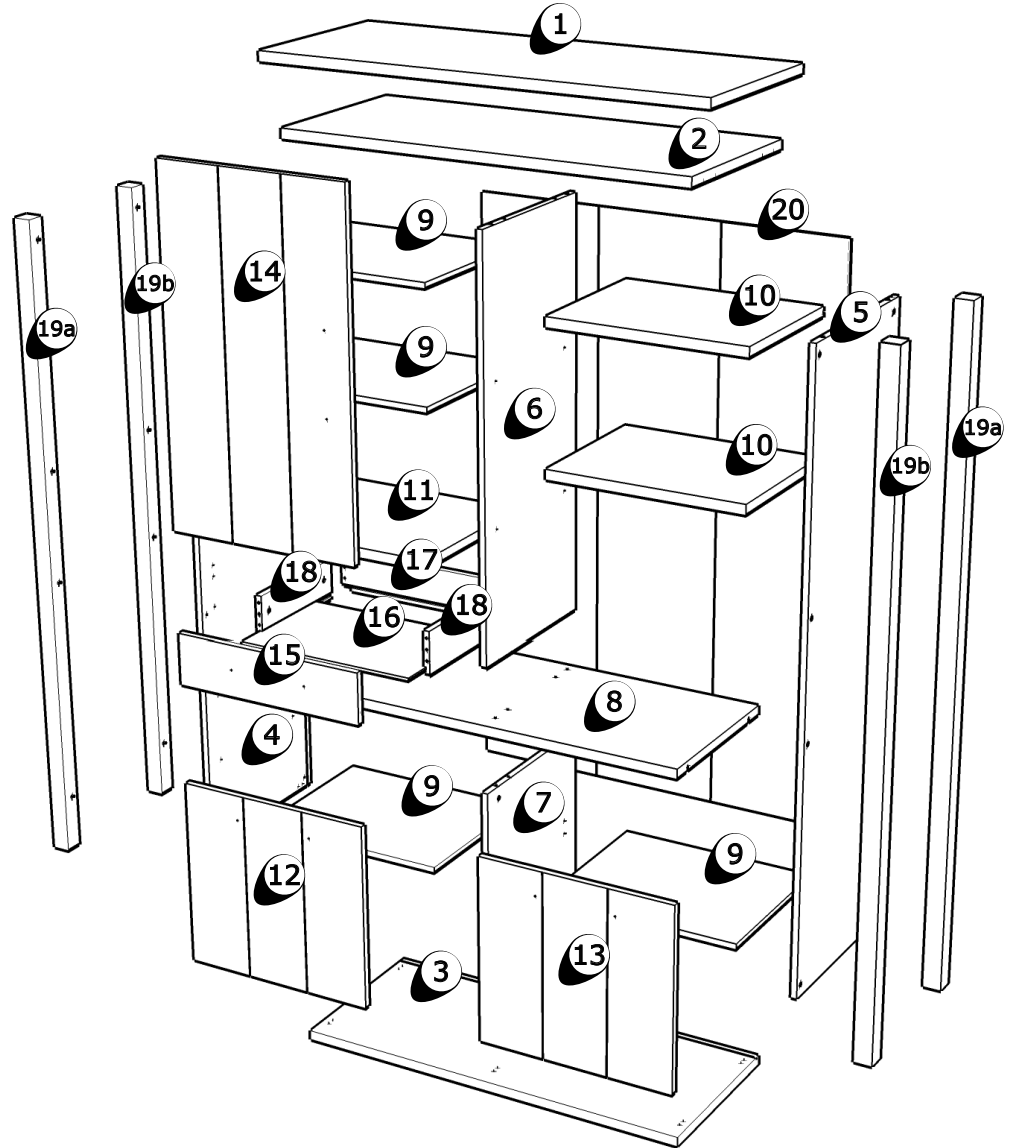
COULEUR - COLOR - FARBE



-  T5225272
-  T5225281
-  T5225562
-  T5225289
-  T5225290
-  T5225295
-  T5225294
-  T5225303
-  T5225297
-  HLOVINABANK1
-  T5225302
-  T5225308
-  T5225314
-  T5225313

-  T5225320
-  T5234387
-  G5234378

-  G5234375
-  G4807813
-  G100205 L 1713 B1131



TOELICHTING EXPLICATIONS - EXPLANATION - ERKLÄRUNG