
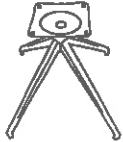



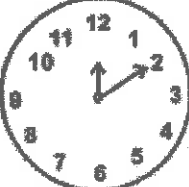
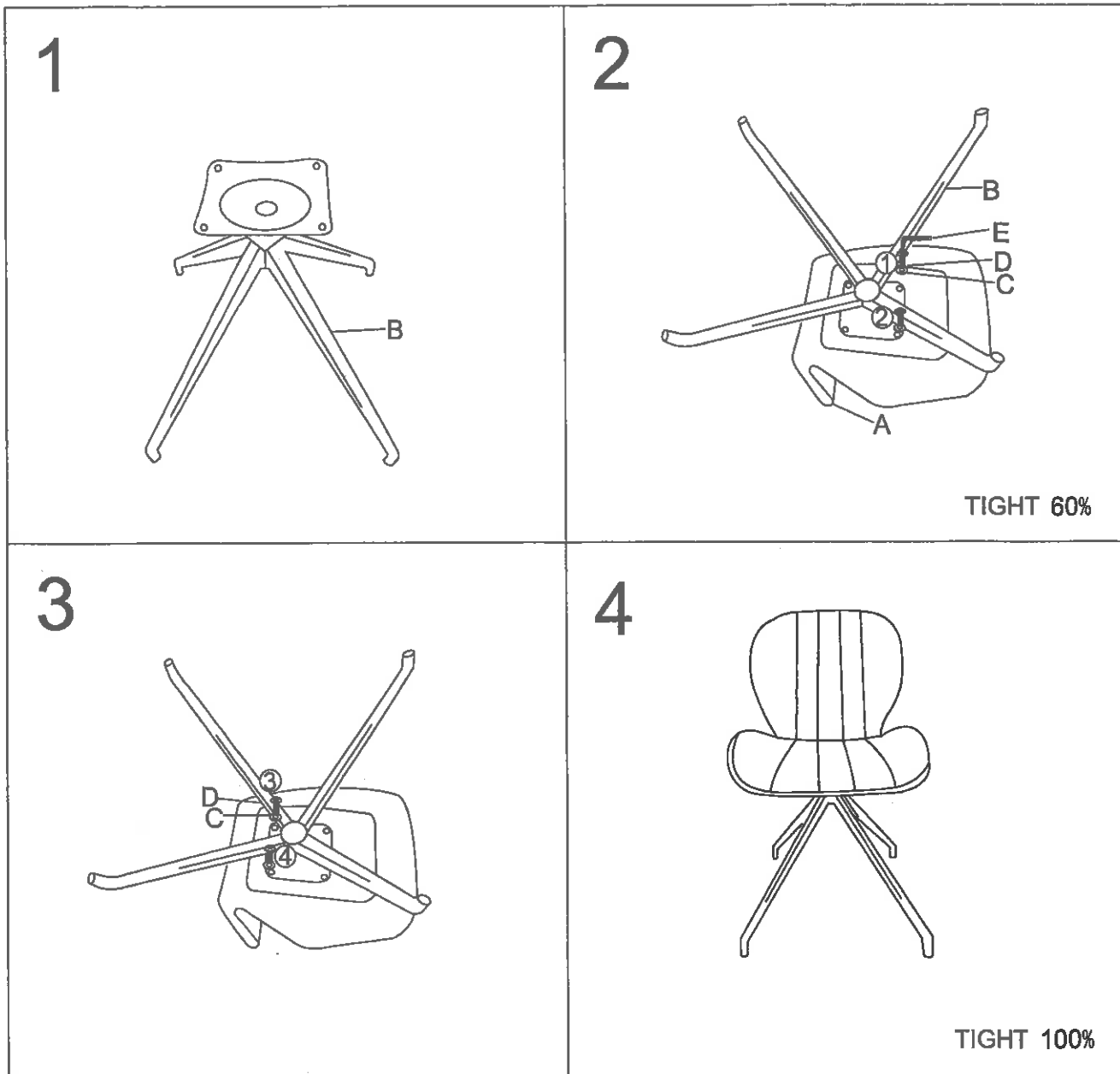


ASSEMBLY INSTRUCTION



ITEM:ST1705 - STOEL - PU MOUSE

A x1 	B x1 	C x4  $\phi 6 \times \phi 16 \times 1.5$	D x4  M6X16	E x1  M5	
--	--	--	---	--	---



Tight all screws 60% Then put the chair on flat surface, make sure the chair is flat.
Then tight all screws 100%. Once in a while, tight all screws.