

KOBE



productsheet

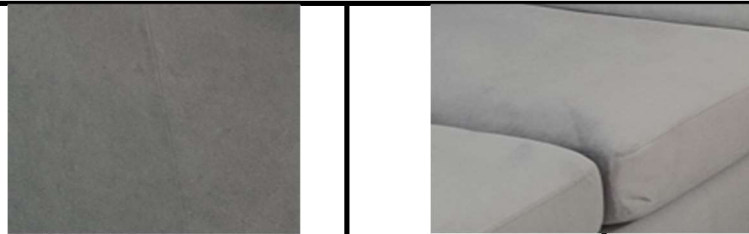
loose pillows : 10 pillows
sides description uni 2B+C+2B
Configuration sofa corner L shape
outside dimensions cm: 234x234x66(90)
bed size cm : no bed
textile 1 Steel Velvet Grey
textile 2
textile 3



size in detail

design

Fabric - textiles



Steel Velvet Grey

Legs

Leg silver plastic - H=4,5cm
width 22 cm
color silver



stitching :



standard double stitching / decoration back pillows

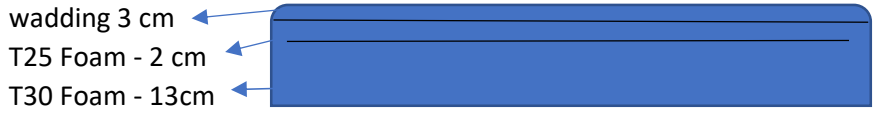


KOBE



construction details

construction made of : chipboard 15mm and 22 mm
 wood : pine and beach
sitting pillow wave spring Type-B - to increase sitting confort
17 cm high Foam on sitting area = T30 & T25
 foam on backrest = T25
 foam in headrest = T25



technical specification / real pictures from production



logistic data

Kobe consist of :	weight kilo	collie size in cm			volume m3	
		h	l	d		
box 1 - 2seater with arm :	46	71	140	97	0,97	m3
box 2 - corner :	31	71	95	95	0,66	m3
box 3 - 2seater with arm :	46	71	140	97	0,97	m3
total kg:	123				2,6	m3
loadability on 115m2 :	45 sets					