

Redding resting chair

Item 0000103062 designrights®



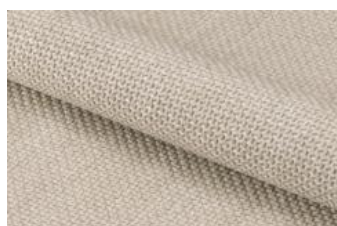
Redding resting chair, Basel fabric beige 24, base matt black rough powder coated steel, with tuftings & square stitchings, 76,5x89,5x99 cm

Meet the modern interpretation of the classic wingback chair. Designed with softer and smooth edges and square stitching, the chair brings a contemporary touch to any home. Featuring a curved high back, this resting chair allows sitting back comfortably.

- Modern resting chair with a contemporary touch
- Upholstered in a structured beige cover with a two-tone effect
- Decorative square stitching and tuftings for a textured look
- Slim steel legs with a black powder coated finish for contrast and stability
- Designed by our in-house designer Lasse Cha Pedersen
- Danish design exclusively protected for Actona
- FSC™ certified

Cover: Basel fabric beige 24

Base: steel matt black rough powder coated



Details and specifications

Redding resting chair 0000103062

Main info	
Model	Redding
Item group	resting chair
Item no.	0000103062
EAN code	5713941318343
Size (WxDxH)	76,5x89,5x99 cm
Features	tuftings & square stitchings
CBM	0.37 cbm

Dimensions	
Width	76.5 cm
Depth	89.5 cm
Height	99 cm
Backrest height	77 cm
Seating width	52.5 cm
Seating depth	48 cm
Seating height max.	52.5 cm
Armrest height from floor	59 cm
Armrest width	9 cm
Armrest depth	13 cm
Armrest height	29 cm

Cover	
Cover type	Basel
Colour	beige
Colour code	24
Front material	Basel fabric beige 24
Back material	Basel fabric beige 24
Fire resistant	No

Factory	
Factory	84883
Country of origin	CN
Harbour	SHA
Loadability	186
MOQ Direct	50 pcs
Transport type	40' HQ
Transport medie size	68 cbm

Seat	
Webbings	No
Foam seat 1	polyurethane
Density seat 1	25 kg/cbm
Foam seat 2	polyurethane
Density seat 2	25 kg/cbm
Foam seat 3	polyurethane
Density seat 3	18 kg/cbm
Loose seat cushion	No
Reversible seat cushion	No

Back	
Foam back 1	polyurethane
Density back 1	25 kg/cbm
Foam back 2	polyurethane
Density back 2	25 kg/cbm
Foam back 3	polyurethane
Density back 3	21 kg/cbm

Details and specifications

Redding resting chair 0000103062

Base	
type	4-legs
profile	round tapered
Colour	matt black
Material	steel
Surface treatment	rough powder coated
Core	steel
Floor protection	plastic foot caps

Tests & Standards	
Max weight capability main surface	110 kg

Weight	
Gross weight	17.5 kg/pcs
Net weight	15.2 kg/pcs

Details and specifications

Redding resting chair 0000103062

Packaging	
Sales unit	1 pcs
Carton quantity	1 pcs
CBM	0.37 cbm
Fragile	Yes
Assembly	partly
Square box 1	No
Carton 1, width	86 cm
Carton 1, depth	76 cm
Carton 1, height	76 cm
Carton 1, gross weight	17.5 kg/pcs
Carton 1, net weight	15.2 kg