

Wyre coffee table

Item 0000103103



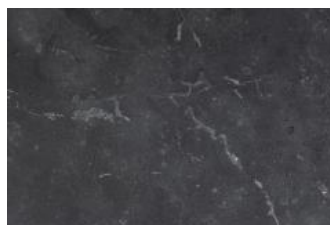
Wyre round coffee table, top matt black Izmir rough melamine, wire base matt black rough powder coated steel, Ø80x45 cm

This coffee table emerged from fusing contemporary sophistication and mid-century modern charm. Adorned with a black marble look, the round tabletop provides a stylish surface for small decor and rests atop a black geometric wire base crafted from steel, adding a playful twist. The result is an intriguing coffee table that stands out in eclectic and minimalistic homes alike.

- Round coffee table balancing a fusion of various decorative elements
- Tabletop adorned with a black marble look
- Geometrical wire base crafted from black steel
- Made of easy-care materials
- Flat-packed for optimised transport
- FSC™ Certified

Colour: melamine matt black Izmir rough

Base: steel matt black rough powder coated



Details and specifications

Wyre coffee table 0000103103

Main info	
Model	Wyre
Item group	coffee table
Item no.	0000103103
EAN code	5713941318879
Main shape	round
Size (WxDxH)	Ø80x45 cm
CBM	0.05 cbm

Dimensions	
Width	80 cm
Depth	80 cm
Height	45 cm
Diameter	80 cm

Weight	
Gross weight	9 kg/pcs
Net weight	6.4 kg/pcs

Factory	
Factory	85444
Country of origin	CN
Harbour	XMN
Loadability	1360
MOQ Direct	100 pcs
Transport type	40' HQ
Transport medie size	68 cbm

Base	
type	wire
profile	round
Colour	matt black
Material	steel
Surface treatment	rough powder coated
Core	steel
Leg height	39 cm
Number of legs/bases	4 pcs
Floor protection	plastic foot caps

Tests & Standards	
Max weight capability main surface	20 kg
TSCA	No

Details and specifications

Wyre coffee table 0000103103

Packaging	
Sales unit	1 pcs
Carton quantity	1 pcs
CBM	0.05 cbm
Fragile	Yes
Assembly	knock down
Square box 1	Yes
Carton 1, width	83 cm
Carton 1, depth	86.5 cm
Carton 1, height	7 cm
Carton 1, gross weight	9 kg/pcs
Carton 1, net weight	6.4 kg